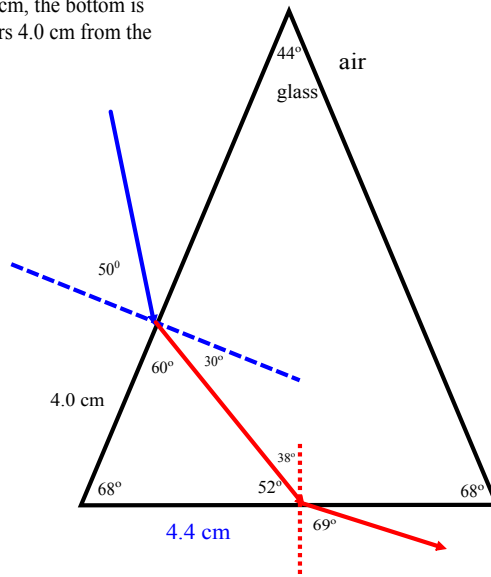
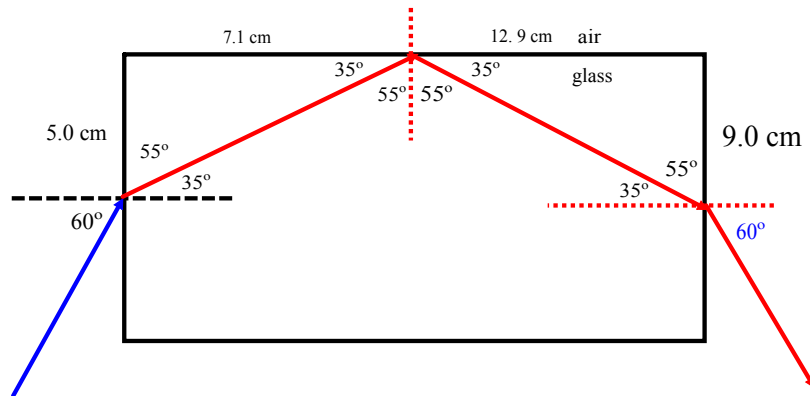


1. Length of vertical sides are 10.3 cm, the bottom is 7.8 cm long and the light ray enters 4.0 cm from the bottom left hand corner.



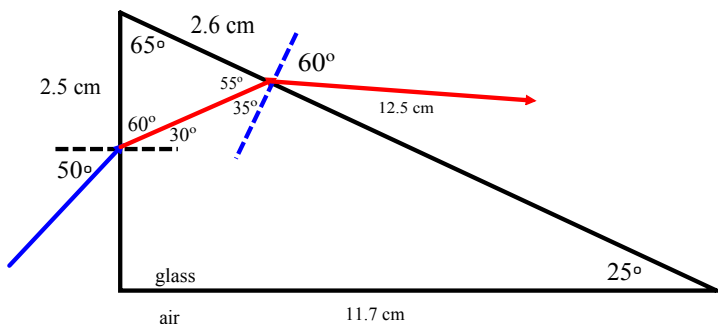
Nov 14-3:18 PM

2. Glass rectangle is 20.0 cm by 10.0 cm and the ray of light enters halfway down the left side.



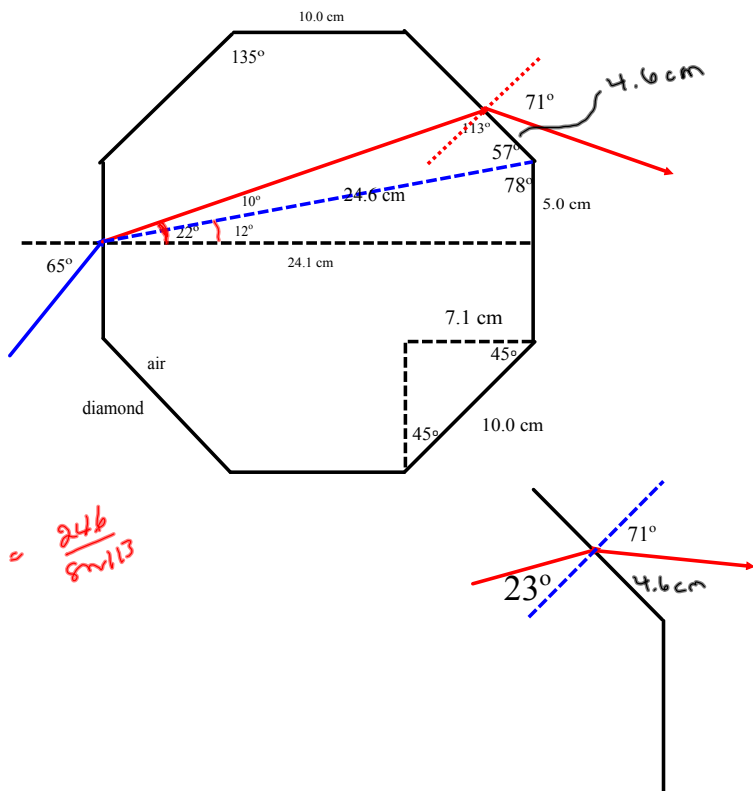
Nov 15-9:08 AM

3. Light ray enters the left side halfway down (2.5 cm from the top left corner).



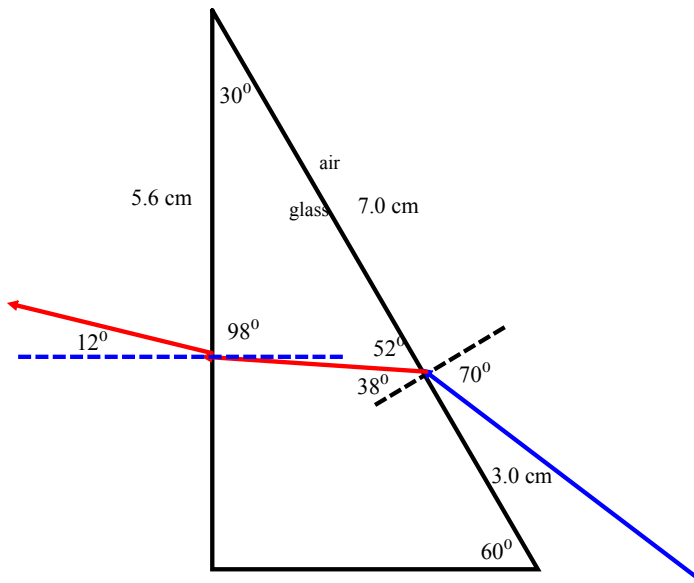
Nov 15-9:11 AM

4. The diamond octagon is 10.0 cm along each side. The light ray enters halfway along the left side.



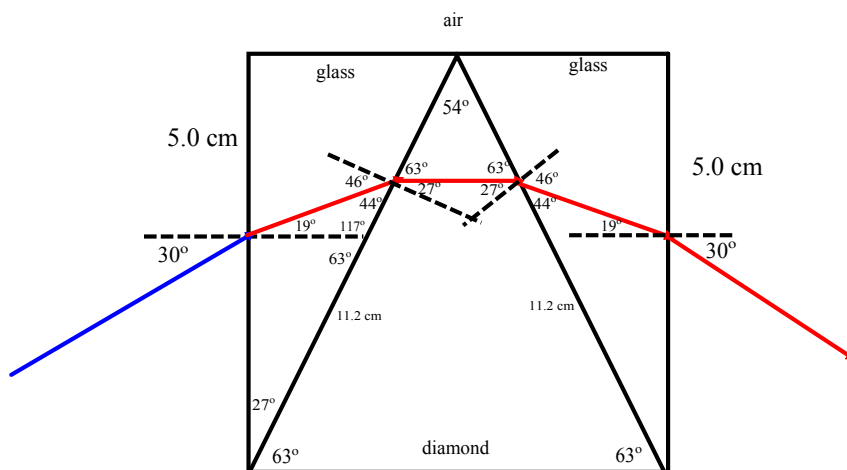
Nov 15-9:16 AM

5. The glass prism is 10.0 cm, by 5.0 cm, by 8.7 cm. The ray of light enters 3.0 cm from the bottom right corner.



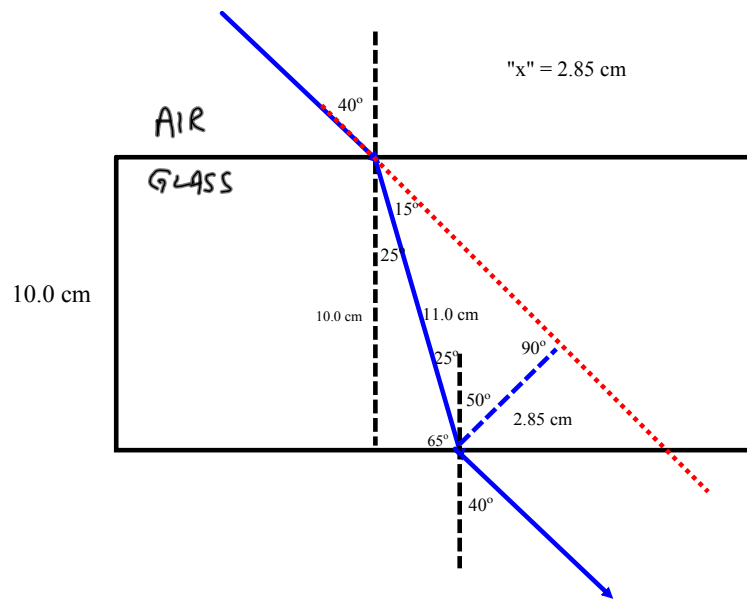
Nov 15-9:22 AM

6. The glass square is 10.0 cm by 10.0 cm. The diamond triangle is isosoles.



Nov 15-9:26 AM

7. Find the distance that the incident ray has been displaced (i.e. the length of "x")



Nov 19-11:05 AM